



Dylan James Scientific

Crucible Guide

Crucible	I.D (mm)	O.D (mm)	L (mm)	Capacity (mm ³)
CR1000 Molybdenum, Mo Tantalum, Ta Tungsten, W Vitreous Carbon Pyrolytic Boron Nitride (PBN)* Alumina, Al ₂ O ₃ * Beryllium Oxide, BeO*	9.0	11.0	27.5	1000
CR3 Molybdenum, Mo Tantalum, Ta Tungsten, W Vitreous Carbon Pyrolytic Boron Nitride (PBN)* Alumina, Al ₂ O ₃ * Beryllium Oxide, BeO*	5.0	6.0	30	390
CR2 Molybdenum, Mo Tantalum, Ta Tungsten, W Vitreous Carbon Pyrolytic Boron Nitride (PBN)* Alumina, Al ₂ O ₃ * Beryllium Oxide, BeO*	4.1	5.5	30.0	210

***Note:**

Ceramic liners (PBN, Al₂O₃ and BeO) are inserted into a metal crucible and as such have a reduced crucible capacity.

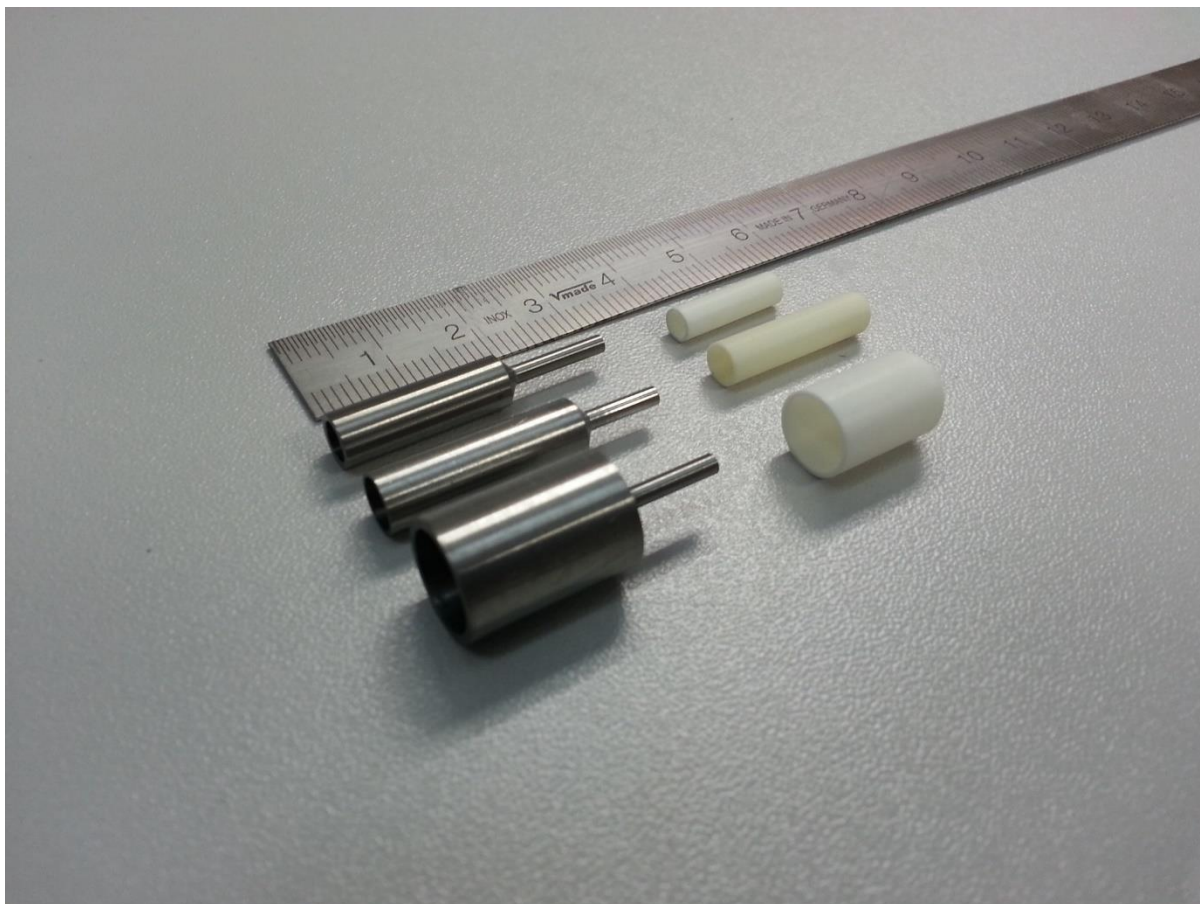


Figure 1: Selection of crucibles and liners